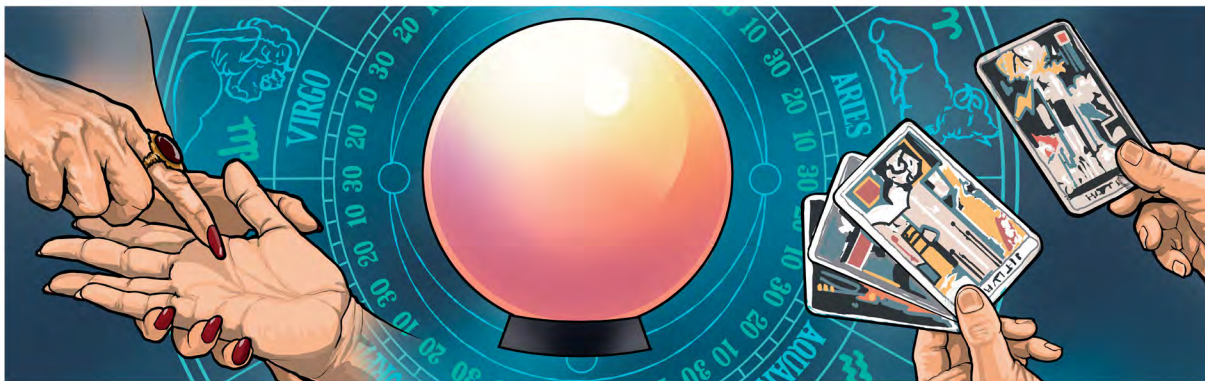


# Bamalaika byo Baji (Lubaji 2)

Lufunjisho lwafuma mu kitango 10 mu buku wa kuba'mba *Nanchi Baibolo Waamba'mba Ka?* uji ne pa [jw.org](http://jw.org).

**BYA KUBA:** Lumbulula byo waitabilamo ne ene mambo, mona bifunjisha Baibolo, ne byo wakonsha kulumbulwila bakwenu byo waitabilamo.



## NANCHI KYATAMA KUPOPWELA MIPASHI NYI?

### 1 PITULUKA MU BYO WAITABILAMO

Mambo ka bantu bamo o bakaina?

---

Mambo ka bantu bamo o baswila?

---

Ñanyi bintu *byo waitabilamo*?

---

---

Mambo ka o waitabila bino?

---

---

# 2

## MONA BIFUNJISHA BAIBOLO

**Mambo a Lesa akanya kupopwela mipashi, mambo bandemona momo bajimbaikila bantu.**  
(Monai kitango 10 mu buku wa kuba'mba *Baibolo Ufunjisha*, mafuka 9-13.)

**Tangai Mpitulukilo ya mu Mizhilo 18:10, 11 ne Ngalatiya 5:19-21.**

Bino byepelo byamwesa byepi Yehoba byo amona kupopwela mipashi?

---

---

---

**Tangai Lumwekesho 12:12, 17.**

Mambo ka Satana ne bandemona banji o babena kujimbaikila bantu?

---

---

---



**Kechi mwakonsha kwita mbanzhi mu nzubo ne, pano mambo ka o mwakonsha kuswishisha bandemona mu bwikalo bwenu?**

# Yehoba uketukwasha kushinda bilengwa bya bapashi batama.

(Monai kitango 10 mu buku wa kuba'mba *Baibolo Ufunjisha*, mafuka 14-19.)

## Tangai Byubilo 19:19.

Kwesakana na jino jishimikila, bena Kilishitu batanshi mu Efisesa betushijile byepi mwakulondela pa kuchinuzhuka kupopwela mipashi?

---

---

---

---

## Tangai Byambo bya Maana 18:10; Efisesa 6:16; ne Yakoba 4:7, 8.

Ñanyi bintu bitupa Yehoba bitulengela kushinda Satana ne bandemona banji?

---

---

---

---

Mambo ka o musanchila pa kuyuka'mba Yehoba uji na bulume kukila bandemona kabiji ukeba kwitukwasha?

---

---

---

---

# 3

## LUMBULULA BYO WAITABILAMO

UMWWE MUNTU WAAMBA'MBA . . .

**Kafwako kyatama ne kwamba pa bikamweka kulutwe.**

WAKONSHA KUKUMBULA'MBA . . .

**Bantu bavula bakonsha kuswa. Amiwa naitabila byapusanako mambo . . .**

---

---

Ñanyi kinembelo kyo wakonsha kutangila yewo muntu?

---

Kwesakana na byaitabila yewo muntu, wakonsha kwisamba nanji byepi kwingijisha kino kinembelo?

---

UMWWE MUNTU WAAMBA'MBA . . .

**Bandemona baji bingi na bulume, onkao mambo kechi twakonsha kwibashinda ne.**

WAKONSHA KUKUMBULA'MBA . . .

**Kya kine kuba'mba bandemona baji bingi na bulume. Bino naketekela kuba'mba twakonsha kwibashinda mambo . . .**

---

---

Ñanyi kinembelo kyo wakonsha kutangila yewo muntu?

---

Kwesakana na byaitabila yewo muntu, wakonsha kwisamba nanji byepi kwingijisha kino kinembelo?

---