

## Hana

BAEBOLO  
KAADE

**40**



Keye 98 Y.M.

1 Y.M.

Keye 1180 K.Y.M.

4026 K.Y.M.

Betelele buluku maa li awielee

Odentlanle aze keye 1180 K.Y.M.

Bebolo Adam



**HANA**

**Ɔ NWO EDWEƆƆ** Ngapezonli Samoele mame. Hana bole Gyihova ewoke wo asoneyele nu ke, saa omaa owo raale nrenyia a, obamaa yeazonle wo ndanlesua ne anu. Bawole Samoele la, Hana lile ye ewoke zo na oyele asone olale Gyihova ase.—1 Samoele 2:1-10.

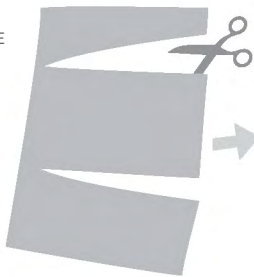
**MUALƆ**

**A.** Teladee ekyi ko maa yenwo ye woladapi la.

**B.** Ebelabole muala.

**D.** Ole adale. Nzinlii Hana wole mrale mrenyia nsa nee mrale mraale nwio.

PELENTE



PE



BU NU NWIO



NA FA SIE

