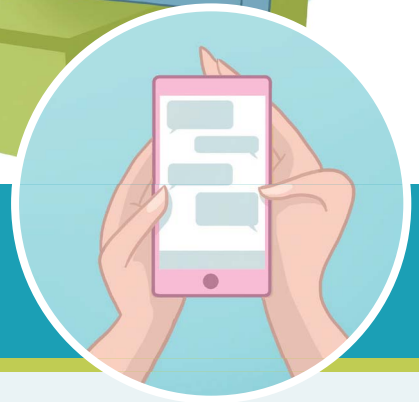
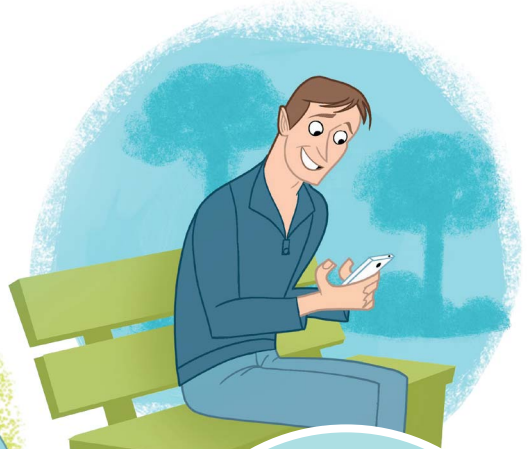


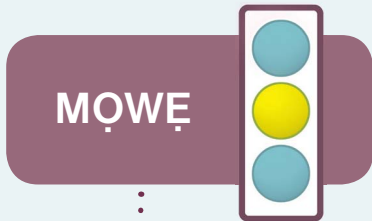
# Dindona Eyin Owanyi Wẹ

E taidi dọ haṣinṣan vonṣtaun de to hiẹ po omẹ vijinu aweto-  
nọ de po ṣeṣen, bọ a to mimọdọ e sọgan yin owanyi. E sọ  
di na we dọ nudopolọ lẹn wẹ ewọ ọsu te. Amọ, a ma kudeji.  
Ete a gán wà?

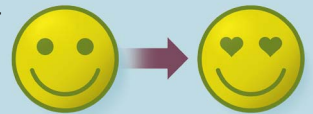


## DODINNANU 1

Kanse Dewe Dọ,  
'BE N'KO WLEAWUFO  
NADO BIỌ HỌNTỌN MẸ YA?'



Nawẹ a gán wagbọn bọ haṣinṣan mi-  
tọn ma na wá lẹzun owanyi-hó na  
*ode to mì mẹ?*




---



---



---



---



# DODINNANU 2

## GBEJE NUMỌTOLANME TOWE LE PỌN



Etẹwẹ na yin numọtolanmẹ towe eyin mọlo dọna we dọ emi to yi yi hẹ mọdevo?



E na vivi na mi



E na vena mi



N'na mọdo e zan mi

Naegbon a do nọ mọdo mi vẹ hú honton honton poun?

---



---



---

# DODINNANU 3

## LENNUPỌNDO MỌLO JI



Be e ko dọna we pọn tlolo dọ a vena emi hú honton de poun ya?

**MỌWE**

**LALA**

YI DODINNANU HE BỌDEGO JI

Etẹwẹ hen we leno ewo jlo na tindo hasinsan owanyi ton hẹ we?

---



---

Be e nọ yinuwa hẹ mọdevo le to alho he go a donu ehele me we ya, kavi e taidi dọ hie kedẹ we e nọ yinuwa hẹ domo?

---



---

Etẹwẹ sogan ko zon bo e ma ko dọna we tlolo dọ emi to wanyina we?

---



---

# DODINNANU 4

## LENNUPONDO NUHE A GÁN WÀ JI



Etẹwẹ na yin kọdetọn lọ eyin a kanse họtọn towe dọ be a wẹna ẹn hù họtọn de poun ya?



**DAGBE:** \_\_\_\_\_

\_\_\_\_\_

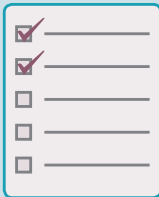
\_\_\_\_\_

**YLANKAN:** \_\_\_\_\_

\_\_\_\_\_

\_\_\_\_\_

Aliho devo tẹlẹ mẹ wẹ a gán yọnen te eyin mọlọ nọ pọn we taidi mẹhe wẹna ẹn hù họtọn de?



Eyin a magbe nado dọhodo whẹho lọ ji hẹ mọlọ, etẹwẹ a gán dọ?

