

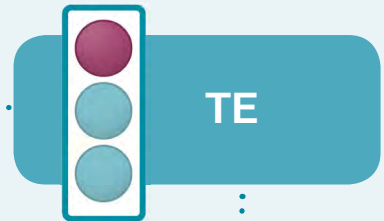
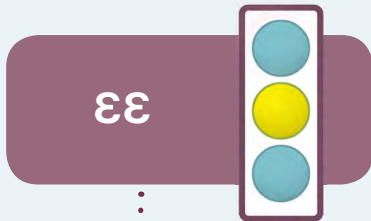
Luká oyeba soki ezali mpenza lolango

Ozali komona lokola yo ná mwana-mobali to mwana-mwasi moko bozali kolingana. Kasi ozali koyeba mpenza te soki ezali bongo. Okoki kosala nini?



LUKÁ OYEBA 1

Omituna boye, 'NAKOKI KOBANDA KOLINGA?'



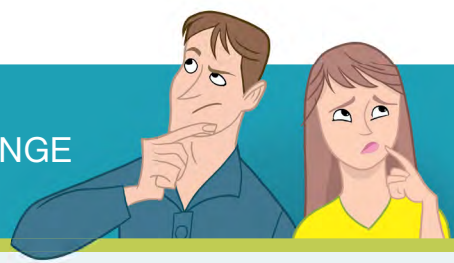
Ndenge nini okoki kosala mpo yo to ye bókómisa te boninga yango lolango?



LUKÁ OYEBA LIKAMBO OYO ELANDI

LUKÁ OYEBA 2

TALELÁ MALAMU NDENGE OZALI KOMIYOKA



Okoyoka ndenge nini soki mwana-mwasi to mwana-mobali yango ayebisi yo ete alingani na moto mosusu?



Esengo



Okotambola motó



Lokola akosi yo

Mpo na nini ozali komona ete bozali kaka baninga mpamba te?

LUKÁ OYEBA 3

KANISÁ MPE MOTO YANGO



Moto yango así alobá na yo polele ete azwaka yo kaka te lokola moninga mpamba?

EE

TE

Eloko nini ezali kondimisa yo ete mwana-mobali to mwana-mwasi yango azalaka na mposa bólingana?

Moninga na yo asalaka mpe bongo epai ya *bato mosusu*, to asalaka makambo oyo olobi kaka epai na yo?

LUKÁ OYEBA LIKAMBO OYO ELANDI

Okanisi ezali mpo na nini ayebisi yo mbala moko te ete alingaka yo?



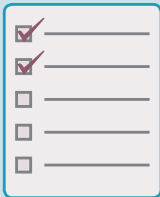
Soki otuni moninga na yo soki azwaka
yo kaka lokola moninga to asukaka
kaka wana te, nini ekoki kobima,
mabe to malamumu?



MALAMU: _____

MABE: _____

Ndenge nini mosusu okoki kosala mpo
oyeba soki moto yango azwaka yo
kaka te lokola moninga mpamba?



Soki omoni malamumu bósolola likambo
yango na ye, okoloba nini?