

Gbezan He Nọ Hẹn Homehun Jiwheyewhe

(Adà 2tọ)

Sinai do weta 12tọ owe *Etẚwẚ Biblu PlẔn Mí Taun?* tọn ji, ehe tin-to-aime to jw.org ji.

LẔNDAI: Nado gbeje nuhe a yise po nuhewutu a do yí i sè po pón, nado gbadoponna nuhe Biblu plẔnmẹ, bo mọ lehe a sọgan basi zẹmẹ nuyise towe tọn na mẹdevo lẹ do.



BE MÍ GÁN HẔN HOMEHUN JIWHEYEWHE MAHOPONNA MẔGBEYINYAN SATANI TỌN YA?

1 GBEJE NUYISE TOWE LẔ PỌN

Naegbọn mẹdele sọgan dọ lala?

Naegbọn mẹdele sọgan dọ mọwẹ?

Etẚwẚ hiẹ yise?

Naegbọn hiẹ do yí enẹ sè?

2

GBADOPONNA NUHE BIBLU PLONME

Dawe nugbono lo Jobu doakonna megbeyinyan Satani ton le po koretan dagbe po.

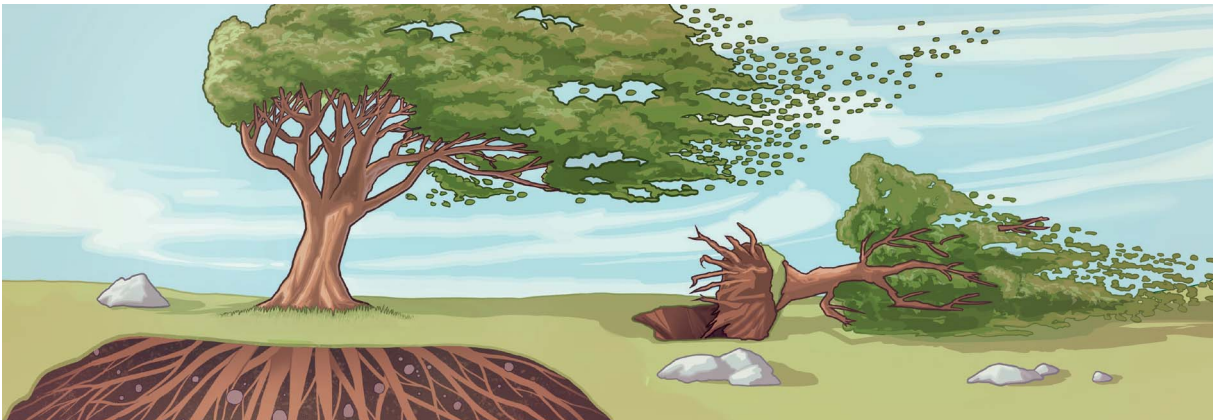
(Pon weta 12to owe *Biblu Plon Mi* ton, hukan 6-12.)

Hia Jobu 1:10, 11.

Etewe Satani wa, na Jobu nido hen hasinsan eton he Jiwheyewhe gble?

Hia Jobu 1:22; 27:5.

Nawe Jobu yinuwa hlan megbeyinyan Satani ton le gbom?



Lehe adò atin de ton yido so, mo we e na penugo nado note to yujehon nukon do. Modopolo, lehe hasinsan miton he Jiwheyewhe sinyen so, mo we mi na penugo nado doakonna nuhahun le do

Satani jlo dọ a ni doalọtena Jehovah sinsẹn, amọ po alogọ Jehovah ọn po a sọgan doakonna.

(Pọn weta 12to owe *Biblu Plọn Mí ọn*, hukan 13-16.)

Hia Howhinwhẹn lẹ 24:10 po 1 Pita 5:8 po.

Nawẹ mí wagbọn do yọnen dọ Satani sọgan yí megbeyinyan tlolo lẹ zan (taidi homeken) po megbeyinyan nuglo ọn lẹ po (taidi gbigbojo) nado hen hasinsan miton he Jiwheyewhe gble?

Hia Jobu 42:12-17 po Howhinwhẹn 27:11 po. (Pọn yedide bejeji ọn.)

Nawẹ mí wagbọn do yọnen dọ home Jehovah ọn nọ hun eyin mí yin nugbono na en?

Numotolanme tewẹ a tindo to whenue a yọnen dọ nudide towe lẹ sọgan hen home Jehovah ọn hun?

3

BASI ZẸMẸ NUYISE TOWE LẸ TỌN

EYIN MEDE DỌ DỌ ...

Eyin međe to pipehẹ ninomẹ sinsinyẹn lẹ, be e dohia dọ nuylankan de wẹ e ko wà niyẹn.

A SỌGAN GBLỌN DỌ ...

N'lẹdọ męsusu wẹ na kẹalọyi linlẹn enẹ. Amọ nuhe n'yise gbọnvo, na ...

Wefọ tẹwẹ a sọgan hia na mẹlọ?

Po pọndohlan mẹlọ tọn po to ayiha mẹ, nawẹ a sọgan yihojledohogo hẹ ẹ do wefọ enẹ ji gbọn?

EYIN MEDE DỌ DỌ ...

To whenuena e yindọ Jiwheyẹwhe tindo huhlọn taun hugan gbẹtovi lẹ, nude ma tin he mí sọgan wà nado hẹn homẹ etọn hùn.

A SỌGAN GBLỌN DỌ ...

Nugbo wẹ dọ Jiwheyẹwhe wẹ tindo huhlọn hugan. Amọ n'yise dọ mí sọgan hẹn homẹ etọn hùn, na ...

Wefọ tẹwẹ a sọgan hia na mẹlọ?

Po pọndohlan mẹlọ tọn po to ayiha mẹ, nawẹ a sọgan yihojledohogo hẹ ẹ do wefọ enẹ ji gbọn?
