

Adame le Efa ga ba Reetse Jehofa


GENESISE KGAOLO 2-3

JEHOFA O DIRILE MOTHO WA NTLHA E BONG **ADAME** KA LOROLE. O NE A RE ADAME LE MOSADI WA GAGWE E BONG **EFA** BA NNE MO TSHIMONG E NTLA YA **EDENE**.

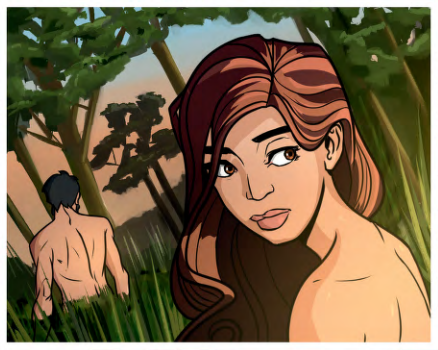
O NE A BA NAYA **DITLHARE** TSA MEFUTA YOTLHE LE **DIJO** TSE DI MONATE.

O NE A BA RAYA A RE BA TLHOKOMELE **DIPHLOGOLO**, A BO A DIRA GORE BA KGONE GO **TSHELA BA SA SWE** E LE DITSALA TSA GAGWE. MME JEHOFA O NE A BA NAYA **TAELO** ENO . . .





JEHOFA A RE
GA RE A TSHWANELA
GO JA SETLHARE SELE
KA GONNE RE
TLA SWA.



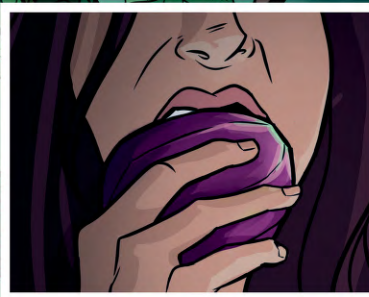
SATANE DIABOLO O NE A DIRISA
NOGA GORE E BOLELELE
EFA MAAKA.



GA O KITLA
O SWA.

SATANE O NE A BATLA GORE EFA A SE KA
A REETSA JEHOFA.

FA O KA LE JA,
O TLA TSHWANA
LE MODIMO.



KE JELE LEUNGO
LENO, ADAME, LE
WENA LE JE.

JEHOFA MODIMO O NE A UTLWILE
BOTLHOKO KA GONNE ADAME LE
EFA GA BA A KA BA MO REETSA.

LO DIRILE ENG?
LO TLILE GO **SWA** LO
BO LO BOELA MO
LOROLENG.

JEHOFA O NE A **LELEKA** ADAME LE EFA
MO TSHIMONG A BO A DIRA GORE
BAENGELE BA **DITŠHERUBA** BA E DISE.

KA GORE ADAME LE EFA GA BA A KA BA REETSA
MODIMO, BA ILE BA LELEKWA MO **PARADAISENG**,
BA **SWA** BA BO BA SA NNE **DITSALA TSA MODIMO**.

RE ITHUTA ENG MO POLELONG ENO?

JEHOFA O NE A NEILE ADAME LE EFA
DIMPHO DIFE?

SE SE KA THUSANG: GENESISE 1:28;
2:7-9, 19, 22.

KE ENG **SE SE DIRAGALETSENG**
ADAME LE EFA KA GONNE BA SA
REETSA JEHOFA?

SE SE KA THUSANG: GENESISE 3:16-
19; BAROMA 5:12.

O KA BONTSHA JANG GORE O
REETSA JEHOFA?

SE SE KA THUSANG: BAFILIPI 2:4;
1 JOHANE 5:3.