

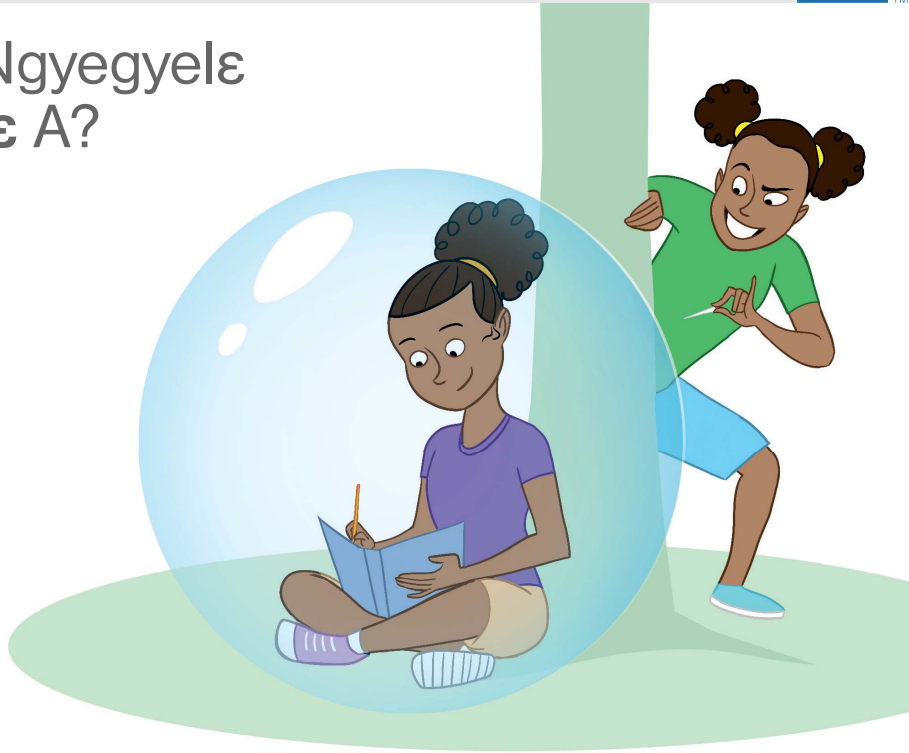
Fanwodi Nwo NgyegyƐlƐ —Duzu A Ɛbays A?



WƆ
MEKƐ

NƆHALƐ
EDWEKƐ

“Ɔys a, mekulo kƐ me ngomekye medi ninyƐ-ne nwo gyima. Noko me mediema mraalƐ ne mo ys me kƐ adoma la, bƐkulo kƐ bƐnwu debie biala! TƐ kƐ asƐƐ melƐfa debie meavea bƐ, emomu mengulo kƐ meka nwole edwekƐ!”
—Allison.



Duzu ati a Allison amediema ne mo ys ye kƐ adoma Ɛ?

Duzu a Allison bahola ays a amaa ɔ mediema ne mo anwu ye kƐ ongulo kƐ oka nwole edwekƐ Ɛ?

Saa Ɛko Allison tenlabelƐ ne bie anu a duzu a Ɛbays a



WỌ SUA NE ANU

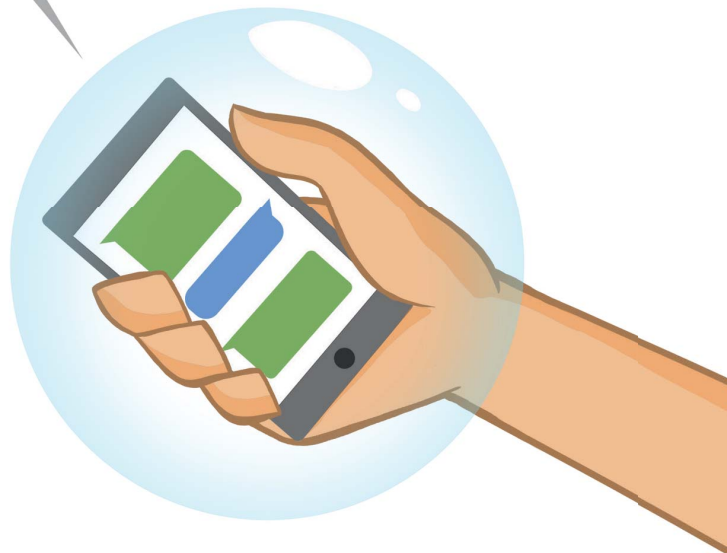
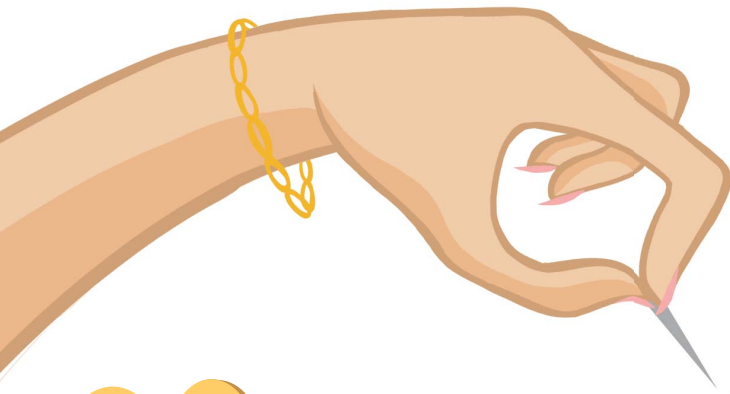
NỌHALẸ EDWẸKẸ

“Saa ninyene angọ boṣ wọ alehyenṣe ne anu a, mengulo kẹ me nee awie badendṣ. Oṣe kpale kẹ ebanyaia awovolṣ mọṣ bṣdwenle ẹ nwo la, noko ọye a bṣwolo me sua ne anu aṣṣevile nu wọ mekẹ mọṣ mekulo kẹ mefa me nwo adwenle la!”
—Ryan.

Ẹzuzu kẹ mọṣ Ryan yele la gyegyele ye awovolṣ ọ?

Saa oṣe zo a, duzu a ọwo kẹ Ryan ye (anzṣe onle kẹ ọye) amaa yeade ye awovolṣ adwenleadwenle zo a?

Saa ẹko Ryan tenlabeṣ ne bie anu a, duzu a **ebaye** amaa wọ awovolṣ alie wọ ali a?



WƏ FONU

NŊHALƏ EDWƏKƏ

“Saa megyakyi me fonu ne meto ɛkɛ a, me mame fa na ɔkenga tɛsɛ *message* ne mɔ. Kenle ko bie, ɔkyikyile me gɔnwɔ bie mɔɔ ɔsuzu kɛ ɔlɛsɛkye me la nɔma ɔvile me fonu ne azo.”
—Nadine.

Ɛsuzu kɛ Nadine ɛ mame dwenle ɔ nwo ɔ?

Saa ɔle zo a, duzu a ɔwɔ kɛ Nadine yɛ (anzɛɛ ɔnle kɛ ɔye) amaa yeade ye mame adwenleadwenle zo a?

Saa ɛko Nadine tɛnlabeɛ ne bie anu a, duzu a **ɛbays** amaa wɔ mame alie wɔ ali a?
