

# Tseba Dipuku tša Beibele ka Hlogo—Karolo 3

Sega dikarata tše gomme o di diriše go tseba dipuku tša Mangwalo a Bakriste a Segerika. Bapala le lapa la geno le bagwera!



PHUTHA

## Mateo

Kamoo Jesu a ilego a tla lefaseng gomme a re ruta ka moka



## Mareka

Mehlolo yeo e bontšhitšego gore Jesu ke Morwa wa Modimo



PHUTHA

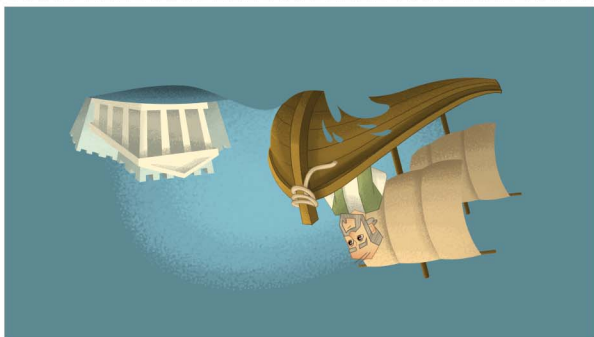
## Luka

Re ka ithuta dilong ka moka tšeo Jesu a di boletšego



## Johane

Ka go swana le Latsaro, bahu ba tla phela gape



PHUTHA

## Ditiro

Kamoo ditaba tše dibotse tša  
Mmušo di ilego tša phatlalala



## Baroma

E hlalosa kamoo Modimo  
a gaugelago batho ka moka



PHUTHA

## 1 Bakorinthe

E re ruta gore lerato  
la kgonthe ke eng



## 2 Bakorinthe

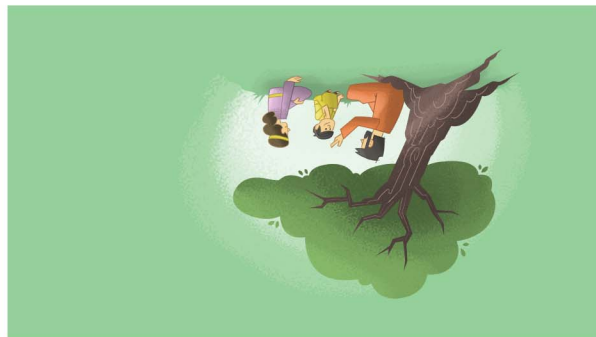
Modimo o rata bao ba  
lebelelago ba bangwe



PHUTHA

## Bagalatia

Swara batho gabotse,  
e bile o se ke wa lapa



## Baefeso

E re ruta gore re ka phela  
bjang ka lapeng



PHUTHA

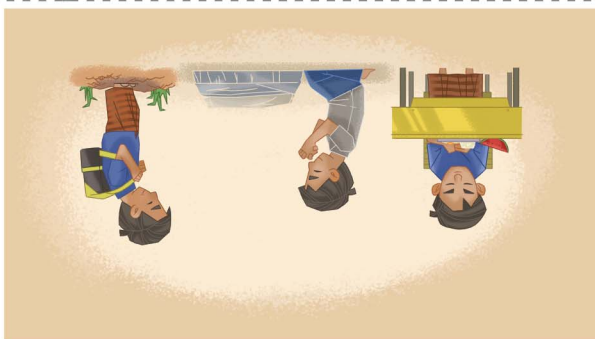
## Bafilipi

Dula o dira se se lokilego  
le se se nepagetšego



## Bakolose

O tla bona gore go kwa  
go dira gore o thabe



PHUTHA

# 1 Bathesalonika

Re ka rapela nako e nngwe le e nngwe, kae le kae



# 2 Bathesalonika

Jehofa o thuša batho ba gagwe maemong ka moka



PHUTHA

# 1 Timotheo

O tsebile Mangwalo a Makgethwa e sa le ngwana



# 2 Timotheo

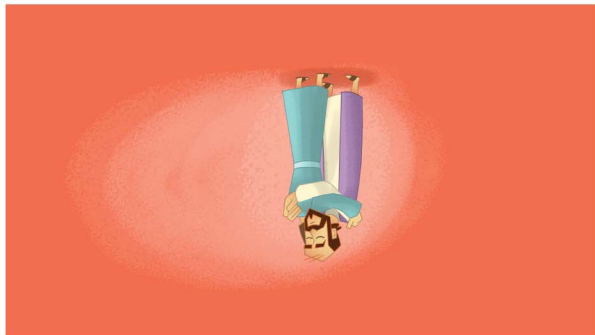
Ka sebate o ile a thuša phuthego gore e gole



PHUTHA

## Tito

Bagolo ba swanetše go tseba gore re ba rata kudu



## Filemone

Lekgoba la gagwe le ile la fetoga mogwera wa gagwe wa Mokriste



PHUTHA

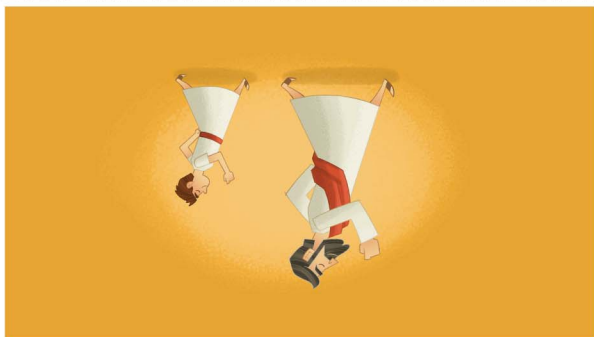
## Baheberu

Re swanetše go ya dibokeng beke e nngwe le e nngwe



## Jakobo

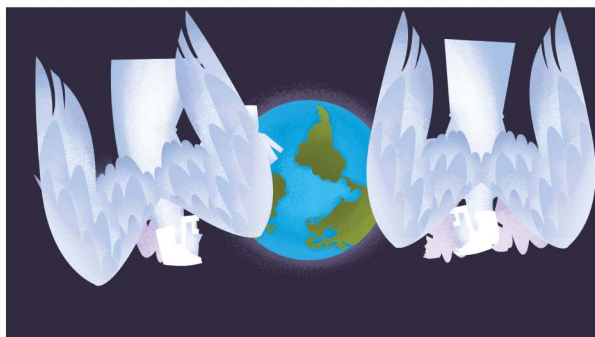
Dimpho ka moka tše dibotse, di tšwa go Modimo



PHUTHA

## 1 Petro

Kriste o re tlogeletše mohlala  
wo re swanetšego go o latela



## 2 Petro

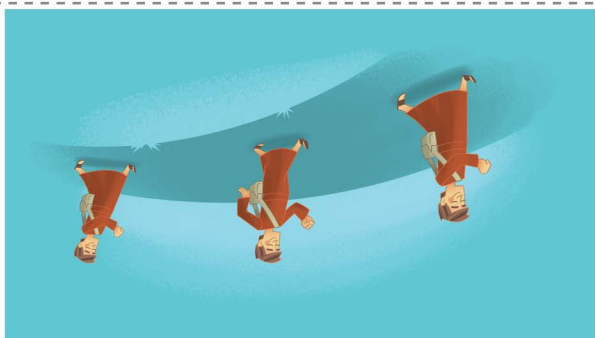
Jehofa o nyaka gore  
batho ba gagwe ba hlweke



PHUTHA

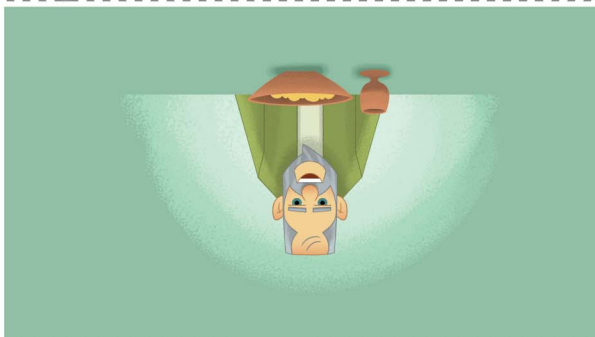
## 1 Johane

Re bontšha gore re rata  
Modimo ge re mo kwa



## 2 Johane

Dula o sepela  
therešong o botega



PHUTHA

## 3 Johane

Dula o bontšha  
bana beno lerato



## Juda

O se dumelele Sathane go fenyā,  
lwela go dira se se lokilego



PHUTHA

## Kutollo

E re botšha gore Paradeise  
e tla ba gona bjang