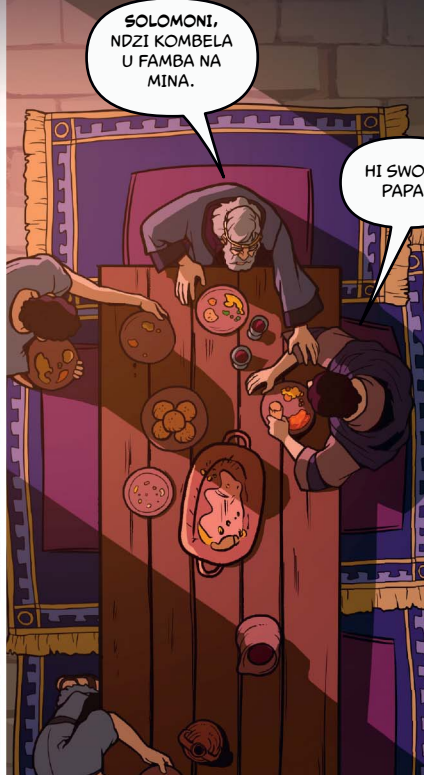


# Yehovha U Nyike Solomoni Vutlhari

1 TIHOSI 2:10-6:1; 11:1-40; 1 TIKRONIKA 22:6-16

HOSI DAVHIDA SE A DYUHARILE. A SWI TIVA LESWAKU N'WANA WAKWE SOLOMONI A TA VA HOSI LEYI LANDZELAKA EISRAYELE.



SOLOMONI, NDZI KOMBELA U FAMBA NA MINA.

HI SWONA PAPA.



SOLOMONI, YEHOVHA U LAVA U VA HOSI ENDZHAKU KA MINA.



A SWI OLOVI KU VA HOSI. HAMBISWIRITANO, YEHOVHA U LAVA LESWAKU U N'WI AKELA YINDLU LEYIKULU,

KAMBE KU TA VA KU RI NTRHO LOWUKULU. U FANELE U VA NI VUTLHARI.



PAPA, KAMBE NDZA HA RI NTSONGO NASWONA ANDZI NA NTOKOTO LESWAKU NDZI NGA VA HOSI.



KOMBELA YEHOVHA LESWAKU AKU NYIKA VUTLHARI NI KU TLHELA U N'WI YINGISA. U TA KU NYIKA LESWI U SWI LAVAKA.

DAVIDA U FILE ENDZHAKU KA  
LOKO A FUME MALEMBE YA 40.  
SOLOMONI U VE HOSI LEYINTSHWA  
EISRAYELE.

SOLOMONI U YE EGIBIYONI A  
YA NYIKELA SWITLHAVELO EKA  
XIKWEMBU.

HI VUSIKU BYEBYO  
YEHOVHA U HUMELELE EKA  
SOLOMONI ENORHWENI.

KOMBELA  
XIN'WANA NI  
XIN'WANA LEXI  
U XI LAVAKA.

NDZI KOMBELA U  
NDZI NYIKA MBILU LEYI  
YINGISAKA LESWAKU NDZI  
TA KOTA KU AVANYISA  
VANHU VA WENA NI KU  
ENDLA SWIBOHO SWA  
VUTLHARI.

A NDZI NGE KU NYIKI  
VUTLHARI NI KU TWISISA  
NTSENA KAMBE NDZI TA KU  
NYIKA NI RIFUWO NI KU  
VANGAMA. KAMBE  
TSUNDZUKA KU YINGISA  
SWILERISO SWA MINA.



SOLOMONI U VE MUNHU WO TLHARIHA KU TLULA TIHOSI HINKWATO EMISAVENI. HI KU PFUNIWA HI YEHOVHA U . . .

AVANYISE MILANDZU YO TIKA.



TWISISE KU KULA KA SWIMILANA NI NDELELA LEYI SWIHARI SWI HANYAKA HA YONA.



QAMBHE SWIVURISO SWA 3 000.



TIRHISANE NI VAN'WAMABINDZU VA LE MATIKWENI YA LE KULE SWINENE.

AKE TINDLU EYERUSALEMA NI MADOROBA ETINDHAWINI TIN'WANA TA ISRAYELE.

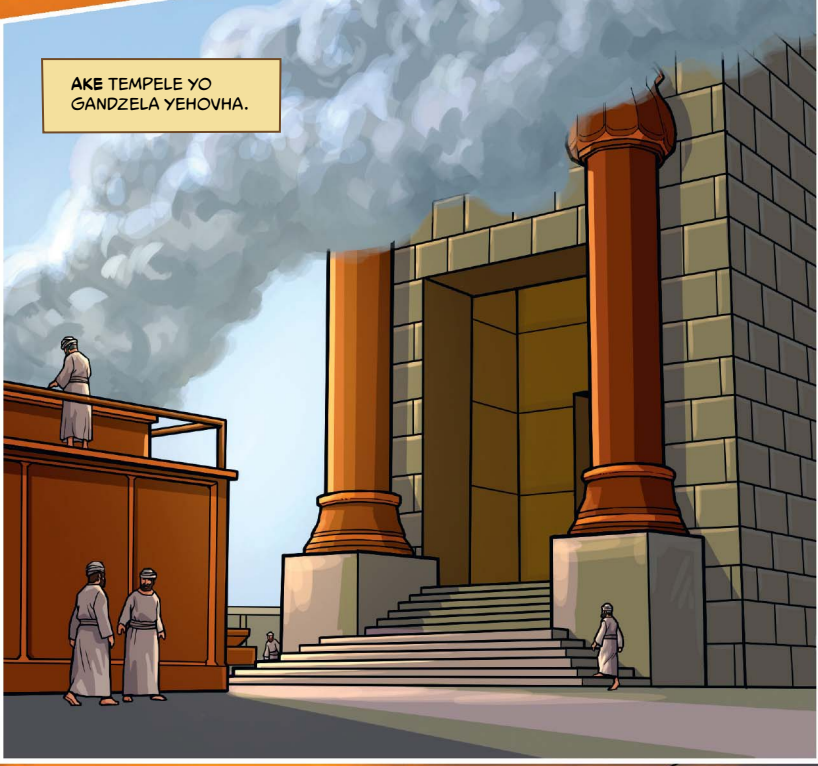


TSALE TINSIMU TA 1 005.

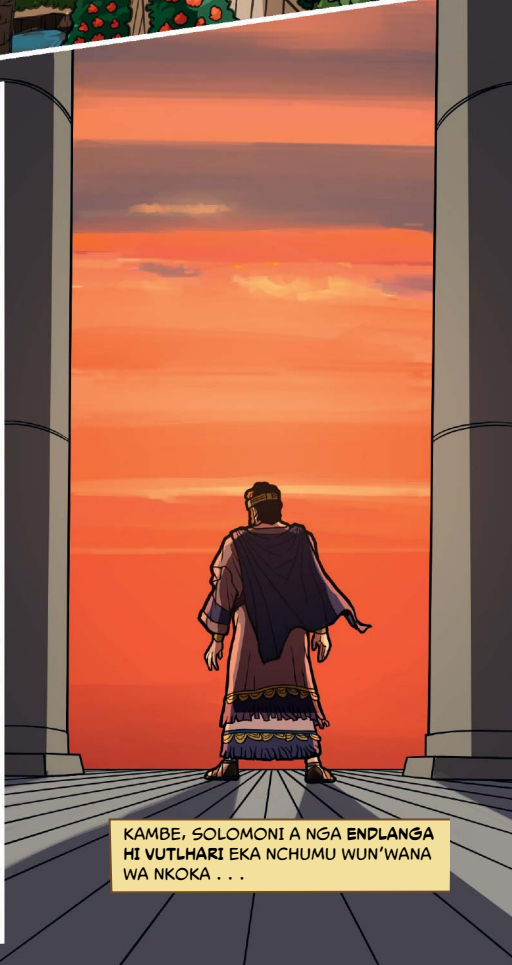


AMUKELE VAFUMI LAVA HUMAKA EKULE LAVA A VA LAVA KU YINGISA VUTLHARI BYAKWE.

AKE TEMPELE YO GANDZELA YEHOVHA.



KAMBE, SOLOMONI A NGA ENPLANGA HI VUTLHARI EKA NCHUMU WUN'WANA WA NKOKA . . .



A NGA N'WI YINGISANGA YEHOVHA.

SOLOMONI U TEKE VAVASATI LAVA A VA NGA GANDZELI YEHOVHA NASWONA U SUNGULE KU GANDZELA SWIKWEMBU SWA VONA.

LESWI SE A GANDZELA SWIKWEMBU SWIN'WANA, SOLOMONI U SUNGULE KU VA NI VUKARHI NI TIHANYI.

KUTANI VANHU VA SUNGULE KU XANDZUKELA SOLOMONI.

SOLOMONI U YE EMAHLWENI A RI HOSI. KAMBE A TWISE YEHOVHA KU VAVA KUTANI A NGA HA TSAKANGA VUTOMI BYA YENA HINKWABYO.

HI DYONDZA YINI EMHAKENI LEYI?

XANA SOLOMONI U BYI KUME NJHANI VUTLHARI?

KUMA TINHLAMULO: 1 TIHOSI 3:7-9, 12.

XANA SOLOMONI A FANELE A ENDLA YINI LESWAKU SWI TA N'WI FAMBELA KAHLE?

KUMA TINHLAMULO: 1 TIHOSI 3:14.

I YINI LESWI VANHU HINKWAVO VA FANELEKE VA SWI ENDLA LESWAKU VA KUMA NTSAKO? KUMA TINHLAMULO: ESAJA 48:17, 18.