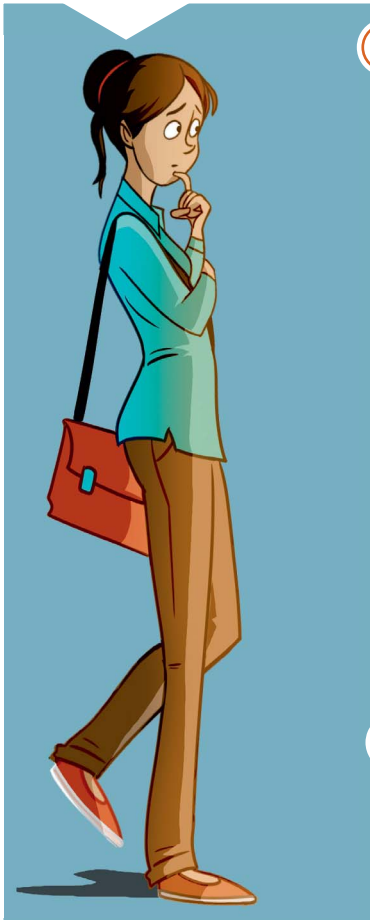


Ku Dyondza Ku Amukela Leswaku A Wu Nge Swi Koti Ku Endla Swilo Hi Ndlela Leyi Hetisekeke

Vanhu lava rhandzaka ku endla swilo hi ndlela leyi hetisekeke a va langutelanga swihoxo, naswona va hetelela va pfilunganyekile hikwalaho ka swihoxo swa vona ni swa van'wana. Xana na wena u tano? Loko swi ri tano, ringeta ku endla leswi landzelaka.

1 LAVISISA XIPHIQO XA KONA

Hlawula swiyimo leswi u rhandzaka ku endla swilo hi ndlela leyi hetisekeke eka swona.



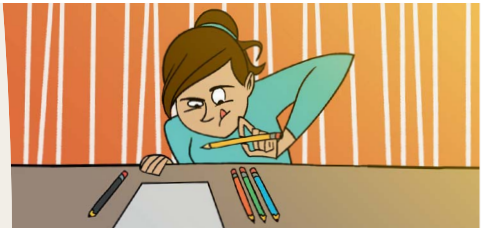
EXIKOLWENI

(Wa khunguvanyeka loko u nga pasanga hi tnyeleti.)



EKAYA

(Loko u basisa kamara ra wena, u lava leswaku swilo hinkwaswo swi tshama swi hlelekile. U karhatiwa ni hi nchumu lowu nga nyawuriki lowu nga tshamangiki endhawini ya wona.)



LOKO U RI NI VANGHANA

(Swa ku karhata swihoxo leswi endliwaka hi vanhu van'wana, ngopfungopfu leswi endliwaka hi vanghana va wena.)



SWIYIMO SWIN'WANA

Sweswi anakanyisisa hi swiyimo leswi u swi hlawuleke.

U swi kombisa hi ndlela yihi leswaku u rhandza ku endla swilo hi ndlela leyi hetisekeke eka swiyimo sweswo?

2 NDLELA YO ANTSWISA

Bibele yi ri: 'vutlhari lebyi humaka ehenhla . . . bya anakanyela.' (Yakobo 3:17) Eka swiyimo leswi u swi hlawuleke, u nga kombisa njhani leswaku wa anakanyela eka leswi u swi languteleke eka wena n'wini kumbe eka van'wana?

► Ematshan'weni ya leswi

► Ndzi ta endla leswi



3 HLAWULA TSALWA

Hi rihi tsalwa leri xi fanelaka kahle xiyimo xa wena?



"Titsongahat[e] loko u famba ni Xikwembu xa wena."—Mikiya 6:8.



"Loko a wu languta swihoxo, Wena Yah, Oho Yehovha, i mani loyi a a ta yima?"—Pisalema 130:3.



"Hikuva a nga kona munhu la lulameke emisaveni la hambetaka a endla leswinene."—Ekleziasta 7:20.



"Hikuva hinkwavo va dyohile, naswona va kayivela ku vangama ka Xikwembu."—Varhoma 3:23.



"Ku anakanyela ka n'wina a ku tiviwe hi vanhu hinkwavo."—Vafilipiya 4:5.

Tsalwa leri u ri hlawuleke ri ta ku pfuna njhani leswaku u lwisana ni xiphiqo xa wena xa ku rhandza ku endla swilo hi ndlela leyi hetisekeke?

4

HLAWULA MUNHU LOYI A NGA XIKOMBISO LEXINENE

I mani loyi u nga n'wi hlawulaka loyi a nga xikombiso lexinene xa ku anakanyela naswona ha yini?



“Loko ndzi sungula ku xiya leswaku ndzi rhandza ku endla swilo hi ndlela leyi hetisekeke, ndzi anakanya hi vanhu lava ndzi va tekaka va ri swikombiso leswinene. Xi-n'wana lexi endleka ndzi va rhandza, hi le-swi va ndzi endlaka ndzi titwa ndzi ntshunxekile loko ndzi ri na vona. Ndzi lava van'wana va titwa hi ndlela leyi fanaka loko va ri na mina naswona sweswo swi endla leswaku ndzi tiyimisela ku tshika mukhuva wo rhandza ku endla swilo hi ndlela leyi hetisekeke.”—Anna.



5

TIVEKELE PAKANI

Hi yihi pakani leyi u nga tivekelaka yona leyi nga ku pfunaka ku lwisana ni mukhuva wo rhandza ku endla swilo hi ndlela leyi hetisekeke?

“Loko swin'wana swi nga fambi hilaha u swi lavaka hakona, tibyele leswaku u endle leswi u nga swi kotaka. Anakanysisa hi leswinene leswi u swi kotaka. Dyondza eka swihoxo swa wena.”
—Kara.