

Yehova alimbisaka mpenza

2 NTANGO 33:1-20



"YEHOVA, NZAMBE YA MOTEMA MAWA MPE YA NGOLU, AYOKAKA NKANDA NOKI TE MPE ATONDI NA MOTEMA BOBOTO MPE NA SOLO."



NKOKO MANASE, OZALI KOSALA NINI?

YOSIYA, NAZALI KOZONGELA MALOBA NZAMBE ALOBAKI. EZALI NDENGE YEHOVA ALOBAKI NA MOIZE ETE AZALAKA.



OLOBAKI ETE YEHOVA AZALI MOTEMA MAWA. ELINGI KOLOBA NINI?

SOKI NZAMBE AMONI ETE TOYOKI MAWA MPO NA MAKAMBO MABE OYO TOSALAKI, **ASALISAKA BISO!** ASALI YANGO EPAI NA NGA!, ATA NSIMA YA MAKAMBO MABE OYO NASALAKI.



KASI OZALI MOKONZI MALAMU.

NAMEKI KOZALA MOKONZI MALAMU KOBANDA YEHOVA ALIMBISAKI NGA! MPENZA.

NAZALAKI ELENGE LOKOLA YO MPE **NALUKAKI KOYEBA** NDENGE BIKOLO MOSUSU ESAMBELAKA BANZAMBE NA BANGO ...



EUMELAKI TE, NATONGAKI BITUMBELO MPO
NA BAALA, NASALAKI MISALA YA MAJI, MPE
NAFUKAMELAKI BANZAMBE YA LOKUTA.
NABOMAKI KUTU BATO OYO BASALI ELOKO TE.



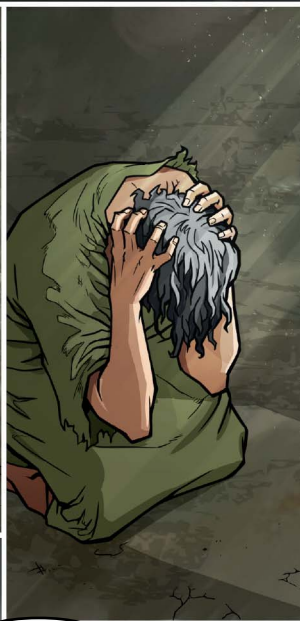
NKOKO NAZALI
KONDIMA TE
ETE OSALAKI
MAKAMBO WANA!
OBONGWANAKI
NTANGO NINI?

NA BONGWANAKI
MBALA MOKO TE,
YANGO WANA
YEHOVA APESAKI
NGAI ETUMBU.

ASALAKI ETE BATO YA ASIRI
BAKANGA NGAI MPE BAMEMA
NGAI NA BABILONE.



NTANGO NAZALAKI NA BOLOKO,
NSUKANSUKA NAKOMAKI KOKANISA MPASI
OYO NAYOKISAKI YEHOVA NA MOTEMA.



NABONDELAKI
YEHOVA AYOKA
MABONDELI NA
NGAI


NAYAMBOLAKI
MASUMU NA
NGAI NYONSO.

MPE NAKOBAKI
KOSENGA YE
ALIMBISA NGAI.




MPE YEHOVA
ALIMBISAKI YO!





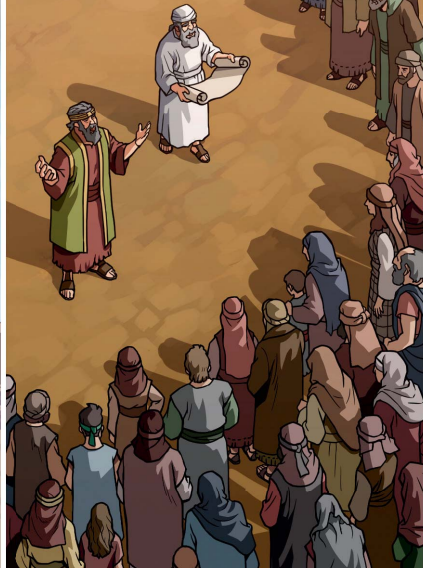
EE! AZONGISAKI NGAI
KUTU NA MBOKA NA
NGAI. KASI NALINGAKI
YEHOVA AMONA ETE
NAZALI MPENZA NA
BOTONDI MPO NA
MOTEMA MAWA NA YE.





YANGO WANA NALONGOLAKI
BIKEKO NA NDAKO YA
YEHOVA . . .



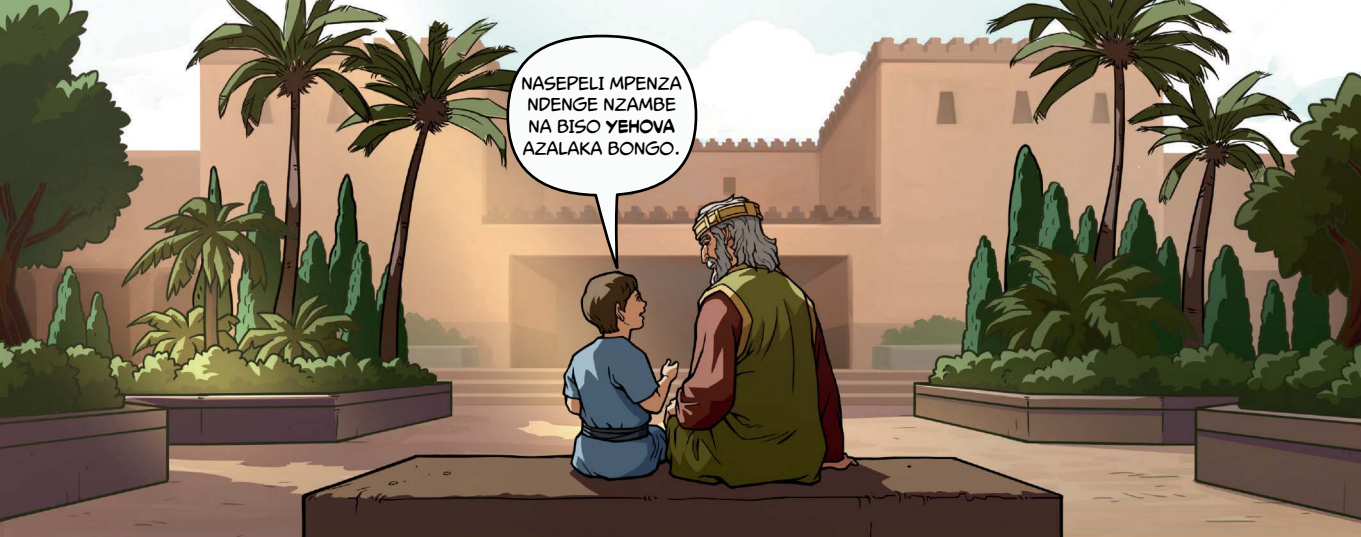
. . . MPE NA NSIMA
OBONGISAKI ETUMBELO
MPO NA YEHOVA?



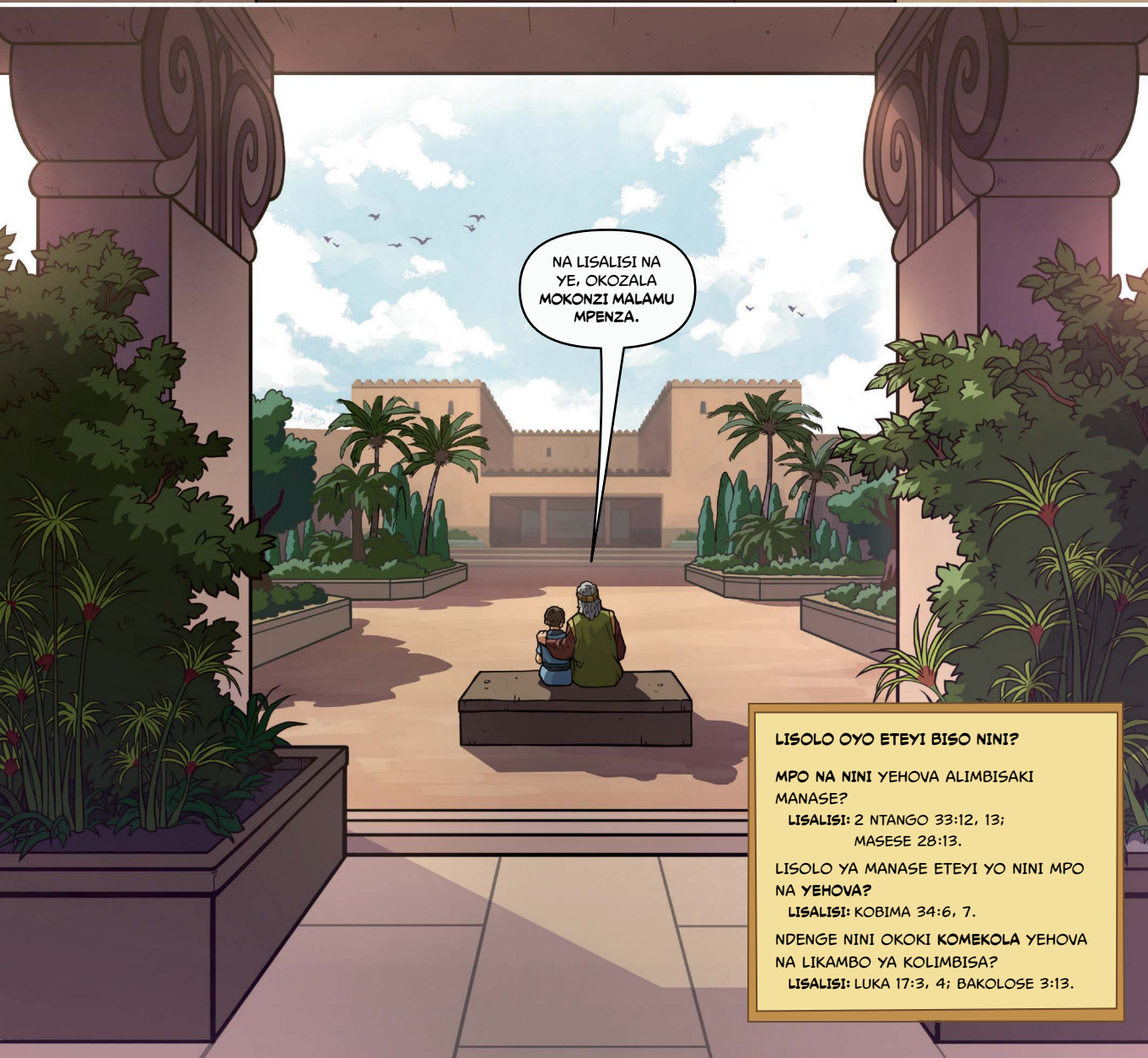
EE, MPE NAYEBISAKI BATO
NYONSO ETE BANGO MPE
BASENGELI KOBANDA
KOSAMBELA YEHOVA.



OMONI, YOSIYA,
ATA SOKI OSALI LIBUNGA,
OKOKI KOSENGA YEHOVA
ASALISA YO. ALIMBISAKA
MPENZA.



NASEPELI MPENZA
NDENGE NZAMBE
NA BISO YEHOVA
AZALAKA BONGO.



NA LISALISI NA
YE, OKOZALA
MOKONZI MALAMU
MPENZA.

LISOLO OYO ETEYI BISO NINI?

MPO NA NINI YEHOVA ALIMBISAKI
MANASE?

LISALISI: 2 NTANGO 33:12, 13;
MASESE 28:13.

LISOLO YA MANASE ETEYI YO NINI MPO
NA YEHOVA?

LISALISI: KOBIMA 34:6, 7.

NDENGE NINI OKOKI KOMEKOLA YEHOVA
NA LIKAMBO YA KOLIMBISA?

LISALISI: LUKA 17:3, 4; BAKOLOSE 3:13.